



Bower

Pest Control
Lamps
Hygiene
Washroom

Bower Products Limited

Unit 31, Abbey Industrial Estate
Woodside End
Wembley, Middx.
HA0 1ZD

Tel 44(0) 20 8903 0983

Web: www.bower.co.uk
VAT no. GB 398 663 681

Email: sales@bower.co.uk

Bank details:

Lloyds Bank Ltd
44-45 The Broadway
Ealing, London,
W5 5JU

Sterling account (£)

A/C. no: 01306121
Sort Code: 30-92-82
IBAN: GB76LOYD 3092 8201 3061 21
BIC no: LOYDGB 21091

Euro account (€)

A/C. no: 86142528
Sort Code: 30-92-82
IBAN: GB16LOYD 3092 8286 1425 28
BIC no: LOYDGB 21091

Terms & Conditions

Please see page 35.



Credit card facilities are available



PestEx 2024



Pest Tech 2024

Tel: +44(0) 20 8903 0983

Email: sales@bower.co.uk

Web: www.bower.co.uk

PEST CONTROL

WITH LED LAMPS

Glue Board Machines

Fly-Check LED	7
Fly-Shield 5,6,&7 LED	7
GLU-5 LED	6
GLU-10 LED	6
GLU-15 LED	6
GLU-80 LED	6
Nano G1 LED	5
Nano G4 LED	5
Nano G5 LED	5
Solo LED	8
Vanquish LED	5
Vulcan 6 LED	5
Vulcan 8 IP LED	5
Wall Fly LED	8

High Voltage Grid Machines

Arc LED	11
Nano H4 LED	4
Nano H5 LED	4
T55 LED	4
T6 LED	4
T96-IP LED	4

WITH FLUORESCENT LAMPS

Glue Board Machines

Fly-shield 1	10
Fly-shield 2	10
Fly-shield 4	10
Fusion 2	10
Fusion 4	10
GLU-30	11
Nano G30	9
Nano G72	10
Plug-in	11
Solo	9
Solo Plus	9
Vulcan 6 & IP	10
Wall Fly	8

High Voltage Grid Machines

Arc 4000	11
Compact Circline	9
Lanterns	11
Nano H30	9
Nano H72	10
T100	10

Other Items

High capacity fly box	15
Extension trays	15
Glue boards	14,15
Grid tester	15
Lamps – Fluorescent (EFK)	12,13
Lamps – LED (EFK)	13
Lamps - UVC for ponds etc.	16
Wall brackets	15

Terms & Conditions	35
--------------------	----

PRODUCTS



Model T6 LED
High voltage grid m/c
See page 4



Vanquish LED
See page 5



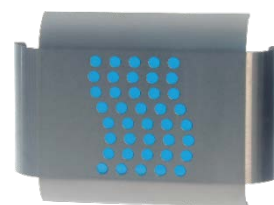
NANO H5 LED
High voltage grid m/c.
See page 4



T55 LED
High Voltage grid m/c.
See page 4



T96-IP. LED
See page 4



Fly-Shield 5 LED
See page 7



Made in the UK

Part no. Description

LED

LED High Voltage Fly Killers



FHN4SW Nano H4 LED in white. S/R Lamps
LS04LS- W LED Lamp (2 required) See page 13
Wall mounted, free standing or suspended



FHN4SS Nano H4 LED in stainless. S/R Lamps
LS04LS- W LED Lamp (2 required) See page 13
Wall mounted, free standing or suspended



FHN5SW Nano H5 LED in white. S/R lamps
LS05LS- W LED Lamp (2 required) See page 13
Wall mounted, free standing or suspended



FHN5SS Nano H5 LED in stainless. S/R lamps
LS05LS- W LED Lamp (2 required) See page 13
Wall mounted, free standing or suspended



F96ISS T96-IP LED in stainless. S/R lamp.
LS05LS- W LED Lamp (1 required) See page 13
Wall mounted or free standing.



FHT6SW T6 LED in white
LS04LS- W LED Lamp (2 required) See page 13
Wall mounted, free standing or suspended
See page 15 for the high capacity fly box.



F55CSS T55 LED in stainless
LS03LS-W LED lamp (2 required) See page 13
Wall mounted, free standing or suspended





Made in the UK

Part no.

Description

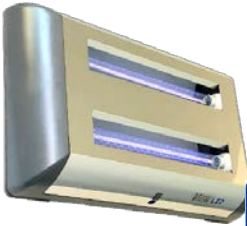
LED

LED Glue Board Fly Killers



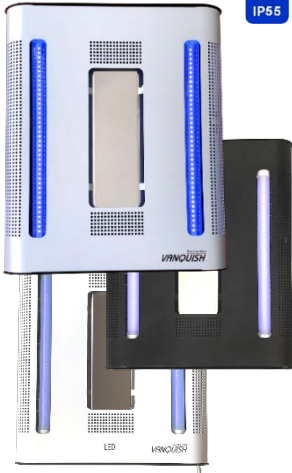
FGT6SS Vulcan 6 LED
MGLTR3- Y Pack of 6 glue boards in yellow.
MGLTR3 Pack of glue boards in black.
LS04LS- W LED Lamp (2 required)
 Wall mounted

See page 13



FGT8SS Vulcan 8 IP55 LED
MGLTR3- Y Pack of 6 glue boards in yellow.
MGLTR3 Pack of glue boards in black.
LS04LS- W LED Lamp (2 required)
 Wall mounted

See page 13



FGVLSA Vanquish LED - Silver
FGVLSB Vanquish LED - Black
FGVLSW Vanquish LED - White
MGVTR2 Pack of 6 glue boards
LS04LS- W LED Lamp (2 required)
 Wall mounted

See page 13



FGN1SW Nano G1 LED in white
FGN1SS Nano G1 LED in stainless
MGNTR2 Pack of glue boards in black.
LL04LS- W LED Lamp (1 required)
 Wall mounted, free standing.

See page 13



FGN4SW Nano G4 LED in white
FGN4SS Nano G4 LED in stainless
MGNTR3 Pack of glue boards in black.
LS04LS- W LED Lamp (2 required)
 Wall mounted, free standing.

See page 13



FGN5SW Nano G5 LED in white.
FGN5SS Nano G5 LED in stainless
MGNTR7 Pack of glue boards in black.
LS05LS- W LED Lamp (2 required)
 Wall mounted, free standing.

See page 13

LED Glue Board Fly Killers



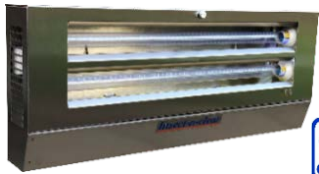
FG05SS GLU-5 LED in stainless
MG6TRA-Y Pack of 6 glue boards in yellow.
LS04LS-W LED Lamp (1 required)
 Wall mounted, free standing.

See page 13



FG10SS GLU-10 LED in stainless
MG6TRA-Y Pack of 6 glue boards in yellow
LS04LS-W LED Lamp (2 required)
 Wall mounted, free standing.

See page 13



FG15SS GLU-15 LED in stainless
MG15TR-Y Pack of 6 glue boards in yellow.
LS05LS-W LED Lamp (2 required)
 Wall mounted, free standing.

See page 13



FG8SSS GLU-80 LED – Suspended.
MG8TRA-Y Glue board (Pack of 6)
LS05LS-W LED Lamp (2 required)
 Wall mounted, free standing.

See page 13



FG8WSS GLU-80 LED – Wall mounted
MG8TRA-Y Glue board (Pack of 6)
LS05LS-W LED Lamp (1 required)
 Wall mounted, free standing.

See page 13



Made in the UK

Part no.

Description

LED

LED Glue Board Fly Killers



FGC2SS Fly-Check 2 LED Stainless S/R lamps
MGCTR3 Pack of 6 glue boards in black
LS04LS- W LED Lamp (2 required)
 Wall mounted

See page 13



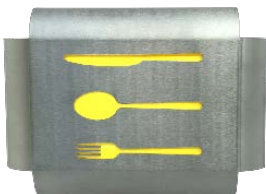
FGL5SS Fly-Shield 5 LED
MG1TRA Pack of 6 glue boards
LS03LS- W LED Lamp (2 required)

See page 13



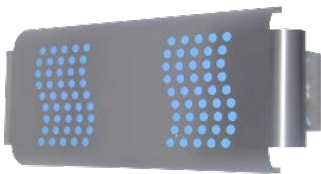
FGL5SC Fly-Shield LED - Coffee
MG1TRA- Y Pack of 6 glue boards-Yellow Correx
MG1TRA Pack of 6 glue boards (Alternative)
LS03LS- W LED Lamp (2 required)

See page 13



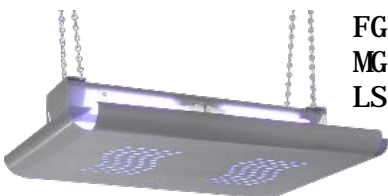
FGL5SL Fly-Shield LED - Lunch
MG1TRA- Y Pack of 6 glue boards-Yellow Correx
MG1TRA Pack of 6 glue boards (Alternative)
LS03LS- W LED Lamp (2 required)

See page 13



FGL6SS Fly-Shield 6 LED
MG2TRA Pack of 6 glue boards
LS04LS- W LED Lamp (2 required)

See page 13



FGL7SS Fly-Shield 7 LED
MG2TRA Pack of 6 glue boards (2 per machine)
LS04LS- W LED Lamp (2 required)

See page 13

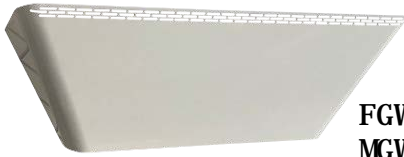


Made in the UK

Part no. Description

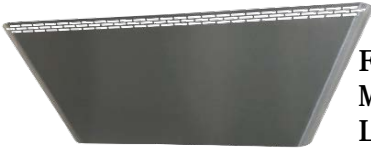
LED

LED Glue Board Fly Killers



FGW2SW Wall-fly LED in white. S/R Lamp
MGWTR2 Glue board for Wall-fly LED
LS04LS- W LED Lamp (1 required)
 Wall mounted

See page 13



FGW2SS Wall-fly LED in stainless. S/R Lamp
MGWTR2 Glue board for Wall-fly LED
LS04LS- W LED Lamp (1 required)
 Wall mount

See page 13



FGS4SA Fly-Shield Solo LED - Silver - S/R lamp
FGS4SB Fly-Shield Solo LED - Black - S/R lamp
FGS4SW Fly-Shield Solo LED - White - S/R lamp
MGSTR1- S Pack of 6 glue boards
LL04LS- W Replacement lamp (1 required)

See page 13



FGS6SA Fly-Shield Solo Plus LED - Silver - S/R
FGS6SB Fly-Shield Solo Plus LED - Black - S/R
FGS6SW Fly-Shield Solo Plus LED - White - S/R
MGSTR1- S Pack of 6 glue boards (2 per machine)
LL04LS- W Replacement lamp (1 required)

See page 13



Made in the UK

Part no. Description

Fluorescent lamps

Glue Board Fly Killers



- FGS2BA** Fly-Shield Solo - Silver - Standard lamp
- FGS2SA** Fly-Shield Solo - Silver - S/R lamp
- FGS2BB** Fly-Shield Solo - Black - Standard lamp
- FGS2SB** Fly-Shield Solo - Black - S/R lamp
- FGS2BW** Fly-Shield Solo - White - Standard lamp
- FGS2SW** Fly-Shield Solo - White - S/R lamp
- MGSTR1 - S** Pack of 6 glue boards
- LL20W** Replacement lamp (1 required) See page 13



- FGS3BA** Fly-Shield Solo Plus - Silver - Std. lamp
- FGS3SA** Fly-Shield Solo Plus - Silver - S/R lamp
- FGS3BB** Fly-Shield Solo Plus - Black - Std. lamp
- FGS3SB** Fly-Shield Solo Plus - Black - S/R lamp
- FGS3BW** Fly-Shield Solo Plus - White - Std. lamp
- FGS3SW** Fly-Shield Solo Plus - White - S/R lamp
- MGSTR1 - S** Pack of 6 glue boards (2 per machine)
- LL20W** Replacement lamp (1 required) See page 13



- FGW1SW** Wall-Fly in white. S/R lamp
- FGW1SS** Wall-Fly in stainless. S/R lamp
- MGWTR1** Pack of 6 glue boards
- LL18W** Replacement lamp (1 required) See page 12



- FGN3SW** Nano G30 in white. S/R lamps
- FGN3SS** Nano G30 in stainless. S/R lamps
- MGNTR3** Pack of 6 glue boards
- LS15WS** Replacement lamp (2 required) See page 12



Made in the UK

Part no. Description

Fluorescent lamps

High Voltage Grid Fly Killers



- F45CBW** Compact Circline in white.
- F45CSW** Compact Circline in white. S/R lamp
- LC22W** Replacement lamp (1 required) See page 13



- FHN3SW** Nano H30 in white. S/R lamps
- FHN3SS** Nano H30 in stainless. S/R lamps
- LS15WS** Replacement lamp (2 required) See page 12



Made in the UK

Part no.

Description

Fluorescent lamps

FEATURED



F10CSW T100 in white. S/R lamps
F10CSS T100 in stainless. S/R lamps
LC22W Replacement lamp (2 required)

See page 13



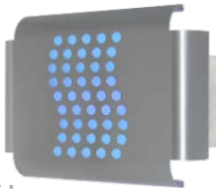
FGF2SW Fusion 2 in white S/R lamp
FGF2SS Fusion 2 in stainless S/R lamp
MGFTR2 Pack of 6 glue boards
LL18W Replacement lamp (2 required)

See page 12



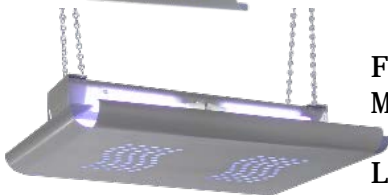
FGF4SW Fusion 4 in white S/R lamp
FGF4SS Fusion 4 in stainless S/R lamp
MGFTR4 Pack of 6 glue boards
LL18W Replacement lamp (4 required)

See page 12



FG1CSS Fly-Shield 1. S/R lamp
MG1TRA Pack of 6 glue boards
LL18W Replacement lamp (1 required)

See page 12



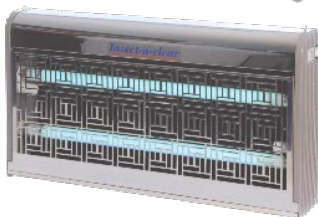
FG4SS Fly-Shield 4. S/R lamp
MG2TRA Pack of 6 glue boards (2 per machine)
LL18W Replacement lamp (4 required)

See page 12



FHN7SW Nano H72 in white. S/R lamps
FHN7SS Nano H72 in stainless. S/R lamps
LS36WS Replacement lamp (2 required)

See page 12



FGN7SW Nano G72 in white. S/R lamps
FGN7SS Nano G72 in stainless. S/R lamps
MGNTR7 Pack of 6 glue boards
LS36WS Replacement lamp (2 required)

See page 12

ONLY AVAILABLE WHILE STOCKS LAST

ECONOMY RANGE



The Arc-LED with its 2, 13 inch LED lamps and electronic transformer is one of the most eco-friendly machines on the market today. Using half the power of the original fluorescent model, it makes it a very cost efficient and eco-friendly machine

FA2LBG Arc-LED-12

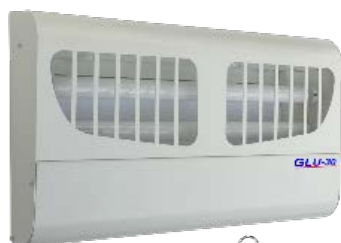


The Arc 4000, with its 2, 18 inch fluorescent lamps, uses a 4000 volt high voltage grid to exterminate flying insects. They are suitable for restaurants, kitchens, food shops etc. where flying insects pose a problem. After the insects have been attracted by the high output fluorescent UVA lamps, and killed by the high voltage grid, they can be quickly and hygienically disposed of in the large catchment tray. Suitable for wall mounting, suspending or free standing. With a years guarantee and competitive pricing makes the Arc 4000 a very popular model.

FA3CBG Arc 4000 – 30w



FGPLBW Plug-in Standard Lamp
 MGPTR5 Pack of 5 glue boards
 LL09WX-G Replacement lamp (1 required) see page 13



FG3WSW GLU-30 in white. S/R lamps
 MG3TRA Pack of 6 glue boards
 LS15WS Replacement lamp (2 required) See page 12



The **L5 & L7 LANTERN** are ABS plastic machine that are suitable for indoor or outdoor use. Tested to IPX4, it is ideal for use round barbecue areas etc. Its special UVA lamp is also used on professional fly killing machines.

FL5CBB L5 Lantern
 Size W 17 x H 34 x D 17 cm

FL7CBB L7 Lantern
 Size W 23 x H 55 x D 23 cm

Standard lamps

Shatter resistant lamps

Watt	Nom Length	Brand	Box Qty.	Code	Code
------	------------	-------	----------	------	------

Fluorescent Lamps For Fly Killers

Straight Lamps – T5 (5/8" dia.)



4	6"	WEMLITE	25	LS04WX- W	LS04WS- W
6	9"	WEMLITE	25	LS06WX- W	LS06WS- W
8	12"	WEMLITE	25	LS08WX- W	LS08WS- W
8	12"	Excellight	25		LS08WS- E
11	9"	SYLVANIA	25	LS11WX- S	
14	22"	OSRAM	20		LS16WS- 0
15	12"	WEMLITE	25	LS14WX- W	LS14WS- W

Straight Lamps – T8 (1" dia.)

Buy 1 box & get all lamps at the box rate



10	13"	WEMLITE	25	LS10WX- W	LS10WS- W
15	18"	WEMLITE	25	LS15WX- W	LS15WS- W
15	18"	PHILIPS	25	LS15WX- P	LS15WS- P
15	18"	HI-BLUE	25	LS15WX- H	LS15WS- H
15	18"	SYLVANIA	25	LS15WX- S	LS15WS- S
18	24"	Pluslamp	25	LS18WX- I	LS18WS- I
18	24"	PHILIPS	25	LS18WX- P	LS18WS- P
18	24"	WEMLITE	25	LS18WX- W	LS18WS- W
36	24"	PHILIPS	25	LS36WX- P	LS36WS- P
36	24"	SYLVANIA	25	LS36WX- S	LS36WS- S

Straight Lamps – T12 (1.5" dia.)



20	24"	WEMLITE	25	LS20WX- W	LS20WS- W
20	24"	SYLVANIA	25	LS20WX- S	LS20WS- S
40	24"	SYLVANIA	25	LS40WX- S	LS40WS- S

Lynx 4 pin 2G11



18	8.7"	PHILIPS	20	LL18WX- P	LL18WS- P
18	8.7"	SYLVANIA	20	LL18WX- S	LL18WS- S
18	8.7"	WEMLITE	20	LL18WX- W	LL18WS- W
36	16.0"	PHILIPS	20	LL36WX- P	LL36WS- P
36	16.0"	SYLVANIA	20	LL36WX- S	LL36WS- S
36	16.0"	WEMLITE	20	LL36WX- W	LL36WS- W

Lynx 2 pin G23



9	6.50"	PHILIPS	20	LL09WX- P	LL09WS- P
9	6.50"	For Plug-in	20	LL09WX- G	
11	9.25"	OSRAM	20	LL11WX- 0	LL11WS- 0
11	9.25"	PHILIPS	20	LL11WX- P	LL11WS- P
11	9.25"	SYLVANIA	20	LL11WX- S	LL11WS- S

Standard lamps

Shatter resistant lamps

Watt	Nom Length	Brand	Box Qty.	Code	Code
------	------------	-------	----------	------	------

Fluorescent Lamps For Fly Killers

SPECIAL PRICES for 3+boxes.

Buy 1 box and get all lamps at the box rate

Tight U Lamps.



6/8	5.75"	ALCO	20	LT08WX- A	
15	7.50"	WEMLITE	20	LT15WX- W	LT15WS- W
25	9.50"	WEMLITE	20	LT25WX- W	LT25WS- W
30	7.5"	WEMLITE	30	LT30WX- W	
40	12"	WEMLITE	20		LT40WS- W

Circline Lamps



22	8"	WEMLITE	12	LC22WX- W	LC22WS- W
----	----	----------------	----	-----------	-----------

Screw Cap (E14-small)



13	6.3"	WEMLITE	20	LL14WX- W	LL14WS- W
----	------	----------------	----	-----------	-----------

Screw cap (E27-large)



13	6.3"	WEMLITE	20	LL13WX- W	LL13WS- W
20	6.8"	WEMLITE	20	LL20WX- W	LL20WS- W

Series starter

10 SST221



LED Lamps For Fly Killers

LED Straight Lamps with built in driver for *Insect-a-clear* LED machines



3	12"	WEMLITE	25		LS03LS- W
4	18"	WEMLITE	25		LS04LS- W
5	24"	WEMLITE	25		LS05LS- W

LED **RETROFIT** lamps for iron ballast machines that have starters.



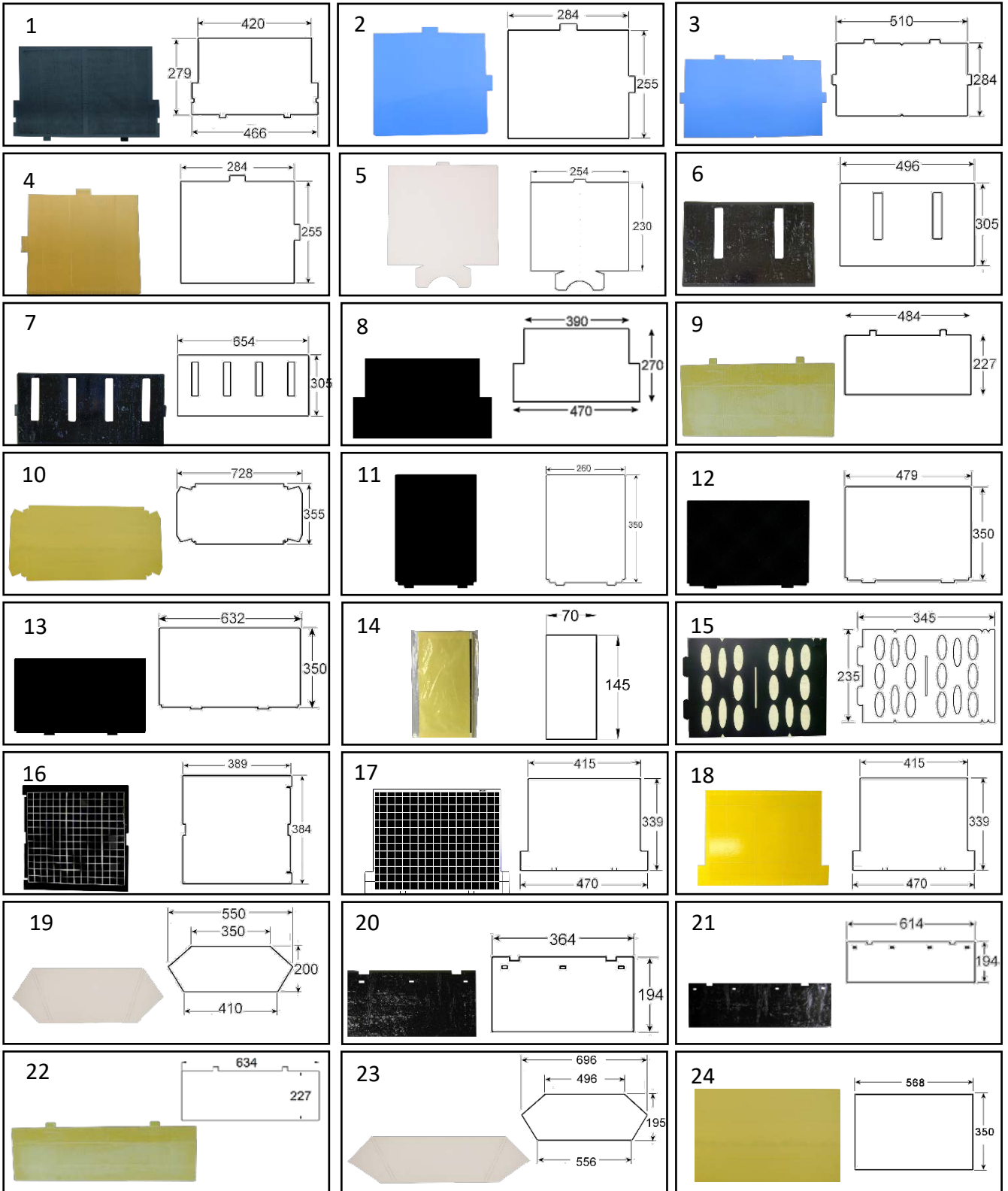
4	18"	WEMLITE	25		LS04RS- W
4	18"	SYLVANIA	25		LS04RS- S
4	24"	SYLVANIA	25		LS05RS- S
6.5	24"	SYLVANIA	25		LS06RS- S

E27 screw LED Lamp with built in driver.



3.8	5.2"	WEMLITE	20		LL04LS- W
-----	------	----------------	----	--	-----------

GLUE BOARDS

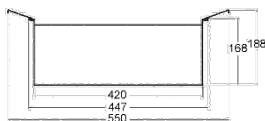
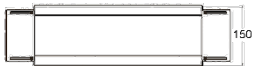


Glue boards for the most popular fly killers are also available from Bower Products. Please phone for more information.

GLUE BOARDS

<u>Ref Code</u>	<u>Model</u>	<u>LED Machines</u>	<u>Pk.</u>	
1	MGCTR3	Fly Check	Fly-check LED	6
2	MG1TRA	Fly Shield 1	Fly Shield 1 LED	6
3	MG2TRA	Fly Shield 2	Fly Shield 2 LED	6
4	MG1TRA- Y	Fly Shield Lunch & Coffee-Yellow	Solo LED range	6
5	MGSTR1- S	Fly Shield Solo & Solo Plus	Solo LED range	6
6	MGFTR2	Fusion 2		6
7	MGFTR4	Fusion 4		6
8	MG3TRA	GLU-30		6
9	MG6TRA- Y	GLU- 60 (Yellow correx)	GLU-5 LED GLU 10 LED	6
10	MG9TRA	GLU-90 (Yellow correx)		6
11	MGNTR2	Nano G20	Nano G1 LED	6
12	MGNTR3	Nano G30	Nano G4 LED	6
13	MGNTR7	Nano G72	Nano G5 LED	6
14	MGPTR5	Plug in		5
15	MGPTR8	Protect-a-lite 8		10
16	MGVTR2	Vanquish	Vanquish LED	6
17	MGLTR3	Vulcan range	Vulcan 6 LED Vulcan 8 LED	6
18	MGLTR3- Y	Vulcan (Yellow)	Vulcan 6 LED Vulcan 8 LED	6
19	MGWTR1	Wall Fly		6
20	MGXTR1	X-Fly 1		6
21	MGXTR2	X-Fly 2		6
22	MG15TR- Y		GLU-15 LED	6
23	MGWTR2		Wall Fly LED	6
24	MG8TRA- Y		GLU-80 LED	6

Miscellaneous.



MCBTXS Adjustable High capacity fly box for models T6 & T100 (and others)



SGELCH Fragrance gels
Cherry - Pack of 12
(See page 34 for mor fragrances)



MF4WA4 Wall bracket (size 4)
765 x 450 x 50

MF4WA2 Wall bracket (size 2)
585 x 350 x 50



TESTER Grid tester

UVC lamps for ponds etc.

Watt Nom Length	Brand	Box Qty.	Code	Cap
-----------------	-------	----------	------	-----

WARNING: Radiation from UVC lamps is harmful to eyes and skin.



G5



Straight Lamps – T5 (5/8" dia.)

4	15cm	WEMLITE	25	TS04CX- W	G5
6	22.5cm	WEMLITE	25	TS06CX- W	G5
8	30cm	WEMLITE	25	TS08CX- W	G5
11	22.5cm	WEMLITE	25	TS11CX- W	G5
16	30cm	WEMLITE	25	TS16CX- W	G5



G13



Straight Lamps – T8 (1" dia.)

15	45cm	WEMLITE	25	TS15CX- W	G13
25	45cm	WEMLITE	25	TS25CX- W	G13
30	90cm	WEMLITE	25	TS30CX- W	G13



G23



Lynx 2 pin UVC lamps

5	10.5cm	WEMLITE	25	TL05CX- W	G23
7	13.5cm	WEMLITE	25	TL07CX- W	G23
9	16.5cm	WEMLITE	25	TL09CX- W	G23
11	23.5cm	WEMLITE	25	TL11CX- W	G23
13	18cm	WEMLITE	25	TL12CX- W	G23



GX23



Lynx 2 pin UVC lamps

13	18cm	WEMLITE	25	TL13CX- W	GX23
----	------	----------------	----	-----------	------



2G11



Lynx 4 pin UVC lamps

18	22cm	WEMLITE	25	TL18CX- W	2G11
24	32cm	WEMLITE	25	TL24CX- W	2G11
36	41cm	WEMLITE	25	TL36CX- W	2G11
60	40.5cm	PHILIPS	25	TL60CX- P	2G11
60	40.5cm	OSRAM	25	TL60CX- 0	2G11



SPECIAL PRICES for 3 or more boxes.
Buy 1 box and get all lamps at the box rate

HOSPITALITY

Check-a-note	25
Hair dryer holders	25
Mirrors	25
Solis Magma Hair dryer	18
Styler Deluxe Button Operated	18, 22
Styler Deluxe Coin Operated	18, 22
Towel Tidi	25
Valera Action hair dryers	19, 21
Valera Drawer Fitted hair dryers	20
Valera Excel hair dryer	20, 22
Valera Fold-away	22
Valera Hair stylers	24
Valera Hotello Bathroom hair dryers	23
Valera MatriXcare	18
Valera Steel Master.	21
Valera Premium & Executive dryers	19, 20
Valera Shaver Socket hair dryers.	19, 23
Valera Swiss Light	20
Valera Swiss Silent Jet 7500 hair dryer.	20
Valera Swiss Silent Jet 8500 hair dryer.	20
Valera Swiss Silent Jet 7700 hair dryer	22
Valera Vanity	17
Miscellaneous	24

PRODUCTS

Code Model



EPAVV1



Valera Vanity – Deep Sea

VA 8612 RC DS UK



EPAVV2

Valera Vanity – Hot Pink

VA 8612 RC HP UK



EPAVV3



Valera Vanity – Pretty Purple

VA 8612 RC PP UK



Tel: +44(0) 20 8903 0983

Email: sales@bower.co.uk

Web: www.bower.co.uk

**EPAVM1**

Valera MatriXcare TF 1600w Black

501.03 MA TF NB

**EPAVM2**

Valera MatriXcare TF 2000w Black

501.00 MA TF NB

**EPAVM3**

Valera MatriXcare TF 2000w Chrome

501.00 MA TF CR

**EPASMB**

Magma black hairdryer.

Type 251

**EPASMB- B** Magma black hairdryer + wall bracket.
Type 251 (See also page 17)**CSDLBU- M** Styler Super Deluxe, button operated
with a Solis dryer. (For higher use areas)
(Also see page 22)**CSDLSX- M** Styler Super Deluxe, 20p coin operated
with a Solis dryer. (For higher use areas)
Available with 20p, 50p, or £1.00 mechanism
The price includes the following mechanisms.
Order codes:
20p = SCO20X 50p = SCO50X £1 = SCO10N
Other mechanisms available at extra cost.
(Also see page 22)**SPASN1**

Superflex hair dryer nozzle



EPAVAW Valera Action wall mounted 1200w
Model 542.05/038A/white & chrome



EPAVAB Valera Action wall mounted 1200w
Model 542.05/038A/black & chrome



EPAVAB- 6 Valera Action wall mounted 1600w
Model 542.06/038A/black & chrome



EPAVAN-6 Valera Action 1600 wall mounted..
Model 542.06/038A All Back



EPAVBW- S Valera Action 1600w with shaver socket
Model 542.06/032.05



EPAVPW- 1 Valera Premium 1100w
Model 533.15/038B



EPAVPW- 3 Valera Premium 1200w Super
Model 533.03/038A



EPAVPW- 6 Valera Premium 1600w Super
Model 533.05/038A





EPAVDW Valera drawer fitted hair dryer 1200w

Model 533.03/033



EPAVDW- 6 Valera drawer fitted hair dryer 1600w

Model 533.05/033



EPAVEX Valera Executive 1200w

Model 554.01/038B



EPAVLB Valera Swiss Silent Jet 8500. 2000w

Model SXJ 8500P.



EPAVSL- 3 Valera Swiss Light 3200. 1600w

Model SL-3200



EPAVJB Valera Swiss Silent Jet. 2000w

Model Sxj7500



EPAVEB- 1 Valera Excel 1800w & wall bracket

Model 561.19/TF





EPAVSB Valera Action 1200w with plug
Model 542.05/black & chrome



EPAVSB- 6 Valera Action 1600w with plug
Model 542.06/black & chrome



EPAVSN Valera Action 1200w with plug
Model 542.05. All black



EPAVSN- 6 Valera Action 1600w with plug
Model 542.06 All black



EPAVSC Valera Steel Master 2100w with plug
Model SM 588.02/I TF CR



EPAVSC- 1 Valera Steel Master 2100w Push & plug
Model SM 588.02/IP CR





EPAVEW- 2 Valera Excel 1875w
Model 561.22



EPAVFB Valera Fold-away 5400. 2000w
Model SL5400 TF



EPAVKB Valera Swiss Silent Jet 7700 Ionic
Model SXJ7700



EPAVKB- B Valera Swiss Silent Jet 7700 Ionic
& wall bracket
Model SXJ7700 & SDRBR5



CSDLBU- L Styler Deluxe with a Valera hair dryer
Model – Button operated (Also see page 18)



CSDLSX- L Styler Deluxe with a Valera hair dryer
Available with 20p, 50p, or £1.00 mechanism
The price includes the following mechanisms
Order codes:
20p = SCO20P 50p = SCO50P £1 = SCO10N
Other mechanisms available at extra cost.
(Also see page 18)





EPANB6 Hotello Bathroom 1200w in white
IP34 rated.
Model 832.01/T



EPANB7 Hotello Club 1400w in white
IP34 rated
Model 832.02/T



EPANB8- A Hotello Super 1500w in white
IP34 rated
Model 832.11/T



EPANB9 Hotello Bathroom 1200w in silver
IP34 rated
Model 832.01/TS



EPANB6- S Hotello Bathroom 1200w in white
With shaver socket
IP34 rated
Model 832.01/RT



EPANB7- B Hotello Bathroom 1400w matt black
IP34 rated
Model 832.02/T

Hair Straighteners

EPAVWB- 2 Valera Swiss X Super Brush & Shine
Model 100.20 IS



EPAVWB- 3 Valera Swiss X Pulse Care
Model 100.20 I



EPAVWB- 4 Valera Swiss X Thermo Fit
Model 101.03



EPAVWB- 5 Valera Swiss X Frise
Model 101.04



SPAHO1 Hotello replacement hose – white



SPAHO2 Hotello replacement hose – black & silver



SPAHO3 Hotello replacement hose – all black



SSAD05 Shaver adaptor. EU to UK

**EMI R01** Single arm mirror**EMI R05** Double arm mirror**EMI R11** Free standing mirror**ETT2GC- N** Towel Tidi for 2 guests**ECANX1** Check-a-note**SDRBR5** Nylon coated steel bracket
(EPAVKB & Solis range – without nozzle)**SDRBR6** Chrome plated plastic bracket – 034/C
(EPAV-6, EPAVEB-1, EPAVSC, EPAVKB)**SDRBR8** Clear plastic bracket – 034/clear
(EPAV-6, EPAVEB-1, EPAVSC, EPAVKB)**SDRBR7** Chrome plated plastic bracket – 040/C
(EPAVJB, EPAVSC)**SDRBR9** All black plastic bracket – 040/B
(EPAVJB, EPAVSC)**SDRBA1** Hair dryer cloth pouch 30cm x 40cm

WASHROOM

Batteries	34
Hand dryer – Model 1200	27
Hand dryer - Chord	27
Hand dryer - Blue Lightning	29
Hand dryer - Crystal	28
Hand dryer - Master	27
Hand dryer - Multi-dri	28
Hand dryer - Premium	29
Hand dryer - Standard	27
Hand dryer - Storm	29
Lunar Air Charm air freshener	31
Lunar fragrances	34
Lunar Geltronic air freshener	30
Lunar Gelmaster air freshener	30
Lunar mini jumbo roll dispenser	33
Lunar paper towel dispenser	32
Lunar Scentronic air freshener	31
Lunar soap dispensers	32
Lunar soap dispensers – foam	32
Lunar Spraytec air freshener	31
Sanitary bins and accessories	33

PRODUCTS



Hand Dryers**HCH1AW** Chord hand dryer in white ABS**HCH1AC** Chord hand dryer in chromed ABS**H1200S** Mod. 1200S hand dryer-brushed stainless**H1200P** Mod. 1200P hand dryer-polished stainless**HST1AW** Standard hand dryer in white ABS**HST1AG** Standard hand dryer in silver**HMA4AW** Master hand dryer in white ABS**HMA4AP** Master hand dryer in polished stainless

Hand Dryers**HMD6AW** Multi-dri hand dryer in white**HMD6AC** Multi-dri hand dryer in chrome finish**HMD6AS** Multi-dri hand dryer in satin finish**HCR1AW** Crystal hand dryer in white.**HCR1AS** Crystal hand dryer in grained finish**HCR1AB** Crystal hand dryer in black

Hand Dryers**HMA3AW** Storm hand dryer in white**HMA3AC** Storm hand dryer in chrome**HBL1XC** Blue Lightning hand dryer in chrome**HPR1AW** Premium hand dryer in white**HPR1AP** Premium hand dryer-polished stainless

Fragrance machines**CAI R4W** Lunar Geltronic in white**CAI R4S** Lunar Geltronic in grained stainless**CAI R4P** Lunar Geltronic in polished stainless**CAI R6W** Lunar Geltronic - white with timer**CAI R6S** Lunar Geltronic - grained with timer**CAI R6P** Lunar Geltronic - polished with timer**CAI R7W** Lunar Gelmaster in white**CAI R7C** Lunar Gelmaster in chrome**CAI R8W** Lunar Gelmaster in white with timer**CAI R8C** Lunar Gelmaster in chrome with timer



- WAI R2W** Lunar Air-charm in white
WAI R2B Lunar Air-charm in beige
WAI R2G Lunar Air-charm in grey



- WAI R2W- S** Lunar Air-charm starter kit in white



- WSCE2W- E** Lunar Scentronic in white



- WSCE4W** Lunar Spraytec in white



- WSCE2W- L** Lunar Scentronic starter kit in white



- WSCE4W- L** Lunar Spraytec starter kit in white



- WSCE2G- C** Lunar Scentronic with a grained front



- WSCE2P- C** Lunar Scentronic with a polished front

**WSDA1W** Lunar automatic soap dispenser - white**WSDA1C** Lunar automatic soap dispenser - chrome**WSDS1S** Lunar soap dispenser - grained stainless**WSDF1W** Lunar foam soap dispenser - white**WSDH1W** Lunar single soap dispenser - white**WSDH2W** Lunar double soap dispenser - white**WSDH1S** Lunar single soap dispenser - stainless**WSDH2S** Lunar double soap dispenser - stainless**WPAD1S** Lunar hand towel dispenser - stainless**WPAD1B** Lunar hand towel dispenser - black/silver 12.00



WPAM1S Lunar mini jumbo toilet roll dispenser in stainless



WPAM1W Lunar mini jumbo toilet roll dispenser in white ABS.



WSB20W Lunar sanitary bin in white



WSB20G Lunar sanitary bin in dark grey



WSSB1W Lunar sanitary bag dispenser in white (bags not included)



SSDI 2C Lunar 6 packs x 25 dispenser bags



SSDI 1C Lunar 48 packs x 25 dispenser bags



SSBL3C Lunar sanitary bin bags 1 x 100 roll
For 20 litre bins



SSBL4C Lunar sanitary bin bags 5 x 100 roll
For 20 litre bins



SSBF2X Lunar sanitary bin sachets – 100



SGELCH
SGELCI
SGELST
SGELCA
SGELMX

12 gels per pack
 Lunar Air-charm - Cherry
 Lunar Air-charm – Citrus
 Lunar Air-charm – Strawberry
 Lunar Air-charm – Cascade
 Lunar Air-charm - Mixed box.
 (contents may vary)



SGEGY6
SGEGC6
SGEGS6
SGEGG6
SGEGX6

6 gels only per pack
 Lunar Geltronic - Cherry
 Lunar Geltronic – Citrus
 Lunar Geltronic – Strawberry
 Lunar Geltronic – Cascade
 Lunar Geltronic - Mixed box.
 (contents may vary)



SFIL01

Lunar Geltronic - filter only



SGE2Y4
SGE2C4
SGE2S4
SGE2G4
SGE2X4

4 gels per pack
 Lunar Gelmaster - Cherry
 Lunar Gelmaster – Citrus
 Lunar Gelmaster – Strawberry
 Lunar Gelmaster – Cascade
 Lunar Gelmaster - Mixed box.
 (contents may vary)



SGECMA
SGECLS
SGECCO
SGECBP
SGECWB
SGECWF
SGECMX

12 cans per pack (270 mls.)
 Lunar Spray cans – Mandarin
 Lunar Spray cans – Lemon sherbet
 Lunar Spray cans – Cosmopolitan
 Lunar Spray cans – Baby powder
 Lunar Spray cans – Wild Berry
 Lunar Spray cans – Washday Fresh
 Lunar Spray cans – Mixed box
 (contents may vary)



SBAT12

Battery – 'D' Size alkaline



SBAT13

Battery – 'C' Size alkaline

Terms and Conditions

1. All quotations, offers and contracts are subject to the following terms and conditions (Conditions). The Company means Bower Products Limited t/a The UV Light Company and the Buyer means any purchaser of goods (Goods) in accordance with these Conditions. By placing an order with the Company the Buyer makes an offer to purchase Goods in accordance with these Conditions. The order is subject to acceptance by the Company by confirmation in writing or by dispatch of the Goods (whichever is sooner), at which stage a contract is formed. Only the parties to the contract may seek to enforce these Conditions.
2. There shall be no variations to these Conditions (whether contained in any order form from the Buyer, whether implied by trade, custom, course of dealing or otherwise) unless written agreement has been obtained from the Company.
3. The price of the Goods shall be the quoted price, or where no price has been quoted, will be that listed in the current price list on the date of formation of the contract. All prices are quoted exclusive of VAT which will be charged at the rate ruling on the day of dispatch.
4. The Company reserves the right to refuse to accept an order for purchase of Goods if the Buyer's credit or payment record is unsatisfactory, unless payment is made in full before dispatch.
5. Where a Buyer has an approved account with the Company (at its sole discretion), full payment (without deduction or set off) is due by the end of the month following the invoice date (not the delivered date). No cash discounts are allowed. Where no such credit terms apply, Goods are subject to payment in full before dispatch, unless otherwise agreed in writing by the Company.
6. If the Buyer fails to make any payment on the due date, the Company reserves the right to: (i) charge the Buyer interest on the overdue amount at a rate of 4% per annum above the Bank of England's base rate from time to time (accruing daily from the due date until actual payment, whether before or after any judgment); and/or (ii) to suspend all deliveries of Goods until payment has been made in full.
7. The Goods shall remain the property of the Company until paid for in full and, until title of the Goods has passed to the Buyer, the Buyer shall hold the Goods on a fiduciary basis as the Company's bailee. The Company reserves the right to resume possession, including entering the premises where the Goods are located, without prior notice.
8. The risk in the Goods will pass on completion of delivery to the Buyer irrespective of whether title has passed or not.
9. Clerical errors and omissions are subject to correction without notice.
10. Goods dispatched may not be returned by the Buyer unless the Goods are faulty or with the prior written agreement of the Company. Where the Buyer has incorrectly ordered Goods and the Company has agreed that they may be returned, the Company reserve the right to charge a 15% handling charge to cover clerical and other expenses. All Goods must be properly packaged, labelled correctly, and returned to the Company, carriage paid. The Goods shall be at the Buyer's risk during transit and any damage during transit of returned Goods shall be the responsibility of the Buyer.
11. Every effort will be made to keep to quoted delivery dates (including 'next day' deliveries) but the Company will not be liable for any delays or any additional costs how so ever caused and time shall not be of the essence. Every delivery shall be considered as a separate contract, and the failure of any delivery shall not vitiate the contract as to the other deliveries.
12. No responsibility can be accepted for damage or shortages unless the Goods are signed for as such on the delivery sheet(s). In all cases, damaged or shortages must be notified to the Company in writing within 24 hours of delivery.
13. The Company reserves the right to amend prices without prior notice.
14. All Goods are sold with the benefit of any manufacturer's warranty (excluding lamps, starters and glue boards), details of which vary between Goods, which the Company shall use its best endeavours to transfer to the Buyer (including in respect of any parts and components, if relevant). Should any Goods prove to be defective within the relevant warranty period, the Buyer should return them to the Company for repair, replacement or credit, as the Company or any third party manufacturer deems fit (provided that the Buyer has complied with all terms of any relevant warranty). Removal, return and installation costs of any item shall be borne by the Buyer.
15. All sleeved lamps sold by the Company are classified as shatter resistant i.e. to reduce the risk of cap detachment and/or ejection of glass fragments in the event of breakage.
16. Nothing in these Conditions shall limit or exclude the Company's liability for death or personal injury caused by its negligence, for fraud or for any other matter where it would be unlawful for the Company to limit or exclude its liability.
17. Subject to the above Condition, the Company shall in no circumstances whatever be liable to the Buyer (whether in contract, tort (including negligence), breach of statutory duty or otherwise) for any loss of profit or for any indirect or consequential loss and the Company's total liability to the Buyer shall in no circumstances exceed the price of the Goods.
18. These Conditions supersede any terms supplied by the Buyer and supersede all prior terms and conditions supplied by the Company, unless agreed by it in writing.
19. A waiver of any right or remedy by the Company is only effective if given in writing and shall not be deemed a waiver of any subsequent breach or default.
20. If any court or competent authority finds that any provision of these Conditions is invalid, illegal or unenforceable, the relevant provision shall be deemed to be deleted and the remaining provisions shall not be affected. If any invalid, illegal or unenforceable provision can be rectified by deletion, the provision shall apply with the minimum modification necessary to make it legal, valid and enforceable.
21. These Conditions and/or any contract subsisting between the Company and the Buyer shall be governed and construed in all respects in accordance with the laws of England and the parties submit to the exclusive jurisdiction of the English courts.



Bower Products Limited

Unit 31, Abbey Industrial Estate

Woodside End,

Wembley, Middlesex.

HA0 1ZD

Tel: +44(0) 20 8903 0983

Email: sales@bower.co.uk Web: www.bower.co.uk